

Procedure 7.21 - Replacing the Stair Arm Assembly

Removing the Stair Arm Assembly

1. Turn off the EFX 544 with the circuit breaker, then unplug the power cord from the wall outlet.

WARNING

Before continuing with this procedure, review the Warning and Caution statements listed in Section One, Things You Should Know.

2. Remove the rear cover as described in Procedure 7.1.
3. Lift the stair arms from the ramp assembly and rotate them towards the back of the EFX 544.
4. If the unit you are servicing was built before January 16, 1996. . .

THEN . . .

Continue with the next step.

OTHERWISE . . .

Skip to Step 11.

5. Place a 2 x 4 piece of lumber or a long-handled tool through the flywheel spoke and against the back of the rear frame upright.

Note:

When you perform the next step, use a long-handled wrench.

CAUTION

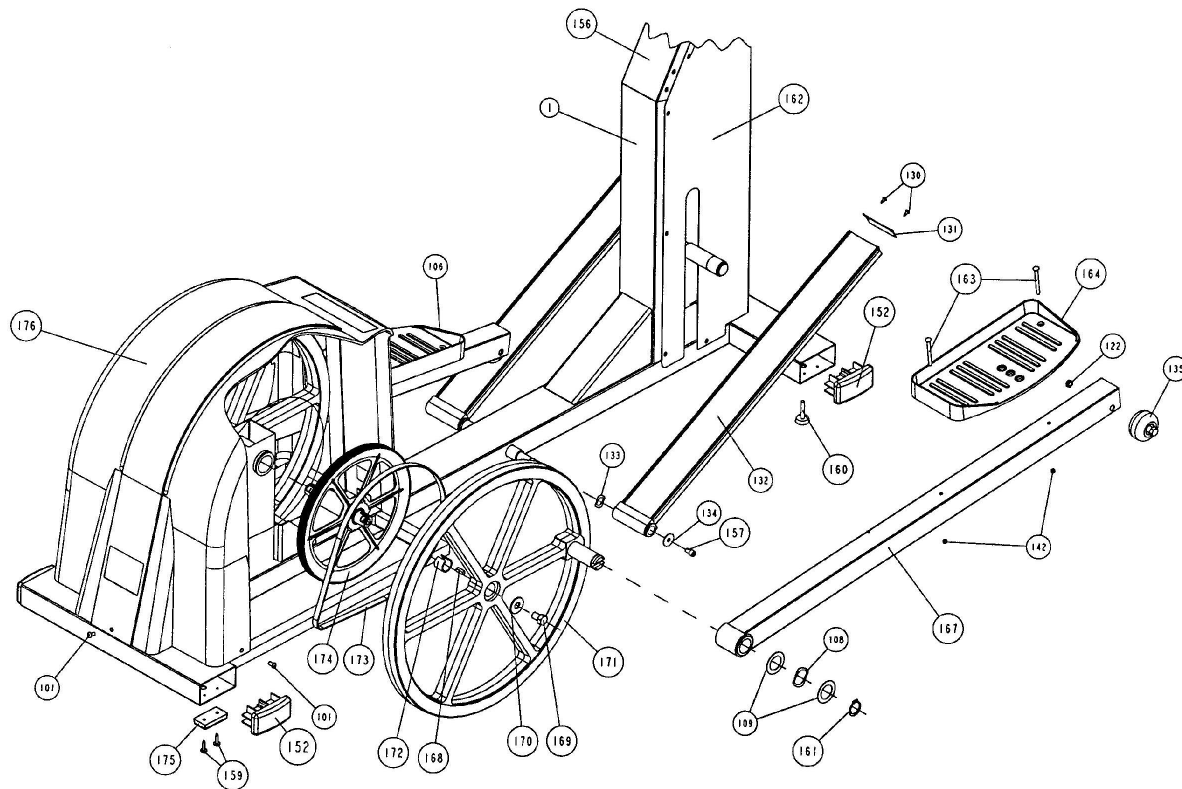
Be careful not to catch your fingers between the stair arm and the flywheel when you perform the following step.

6. Using a 1-1/2 inch wrench or ratchet, remove the bolt and washer that secure the stair arm assembly to the flywheel (see Diagram 7.9).

Replacing the Stair Arm Assembly

7. Place a 2 x 4 piece of lumber or a long-handled tool through the flywheel spoke and against the front of the rear frame upright.
8. Clean the old loc-tite off of the bolt removed in Step 6. Place a few drops of blue loc-tite onto the bolt shaft.

Diagram 7.9 - Stairarm Assembly



9. Install the stair arm assembly on the flywheel and secure with the bolt and washer. Torque the bolt to 100 foot-pounds.
10. Rotate the stair arms towards the front of the EFX 544. Position the stair arms on the ramp assembly. Skip to Step 13.
11. Remove the snap ring, washers and wave washer. Slide the stair arm assembly away from the 544 frame.

CAUTION

Be careful not to catch your fingers between the stair arm and the flywheel when you perform the following step.

12. Slide the stair arm assembly onto the 544 frame. Replace the wave washer, washers and snap ring.
13. Re-install the rear cover as described in Procedure 7.1, then check the operation of the EFX 544 as described in Section Four.